

# PRE – P.L.E EXAMINATION (SET 2), 2022

## PRIMARY SEVEN

### INTEGRATED SCIENCE

Duration: 2 Hours 15 Minutes

NAME: \_\_\_\_\_ STREAM: \_\_\_\_\_

INDEX NO.

--	--	--	--	--	--	--	--	--	--

EMIS NO.

--	--	--	--	--	--	--	--	--	--

#### FOR EXAMINER'S USE ONLY

Sections	Marks	Marks scored (%)
A	40	
B	60	
Total	100	

**DO NOT OPEN THIS BOOK LET UNTIL  
YOU ARE TOLD TO DO SO.**

#### Read the following instructions carefully:

1. The paper has **two** sections: Section A and B.
2. Section A has **40** short questions (40 Marks).
3. Section B has **15** questions (60 marks).
4. Attempt **ALL** questions. All answers to both section A and B **MUST** be written in the spaces provided.
5. All answers must be written using **BLUE** or **BLACK** ball-point pen or ink. Only diagrams and graph work may be done in pencil.
6. Unnecessary alteration of work will lead to loss of marks.
7. Any handwriting that cannot easily be read will lead to loss of marks.
8. Do not fill anything in the boxes indicated for examiners' use only.

**SECTION A (40 MARKS)**

1. Name any **one** delicate body organ protected by rib cage.

.....

2. What name is given to animals which have backbones?

.....

3. Give any **one** product from poultry that is rich in proteins.

.....

4. Why is a person harvesting honey advised to wear gloves?

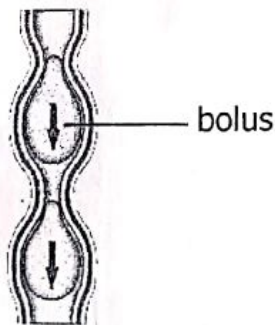
.....

5. How does sound travel from the source to other areas?

.....

6. Identify the process shown in the illustration of human alimentary canal below.

.....



7. How is the switch an important component in electric circuit?

.....

8. A person was seen with a lot of blood coming out of a deep cut on his arm at a higher pressure. Identify the blood vessel that was injured.

.....

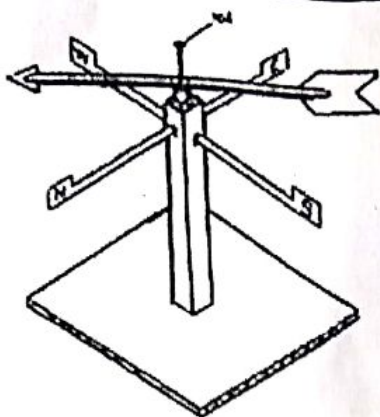
9. Name **one** other immunisable disease spread by tiger mosquito.

.....

10. State **one** law in Uganda about alcohol usage.

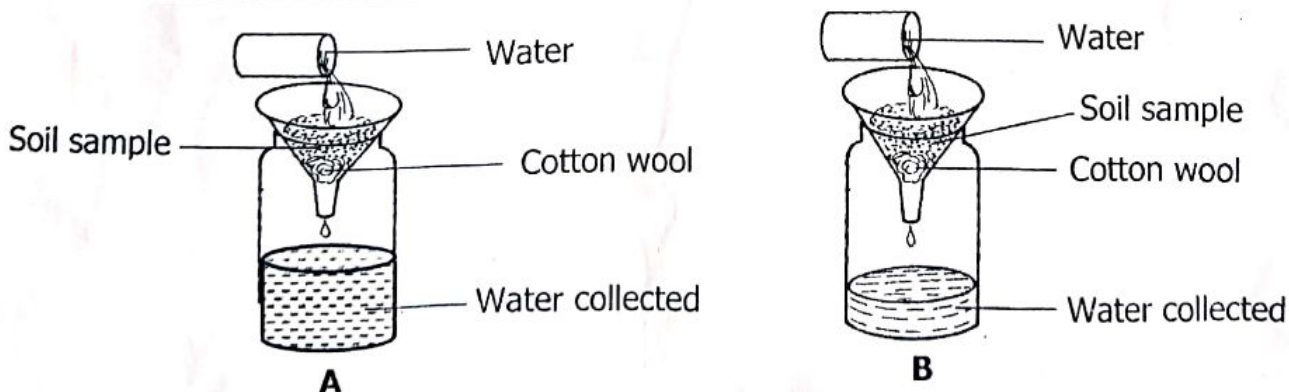
.....

The diagram shows an equipment which uses one of the energy resources to operate. Use it to answer no. 10 and 11.



11. What name is given to the above equipment?  
.....
12. Give **one** way people benefit from the above equipment.  
.....
13. A patient was given medicine written on **2 x 4**. How many tablets did she take in one day?  
.....
14. State the effect of buoyant force on ships and big boats in lakes and seas.  
.....
15. What do we call the turning point of a lever machine?  
.....

A P.7 class carried out the experiment below about soil. Study it and answer questions 16 and 17.



16. What was the above experiment about?  
.....

17. Which of the containers above do you think had clay soil?

.....

18. Why do people wear sweaters during a rainy day?

.....

19. Give a reason why people urinate more frequently on cold days than on hot days.

.....

.....

20. Why is a clinical thermometer placed in the mouth under the tongue?

.....

21. Identify the type of cattle with the shape below.

.....



22. Name **one** example of perennial fruit crop commonly grown in your community.

.....

23. Why are we able to see lightning before we hear thunder during a storm?

.....

24. Write **one** example of edible insects in our society.

.....

25. Name the insect which passes out larva but not eggs during its reproduction.

.....

26. Which item do people use to scrub their bodies so as to promote body hygiene?

.....

27. Where does respiration take place in man?

.....

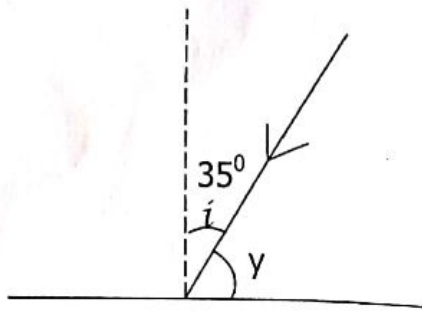
28. Give **one** way how banana fibres are helpful to a primary two boy.

.....

29. In which way do bacteria reproduce?

.....

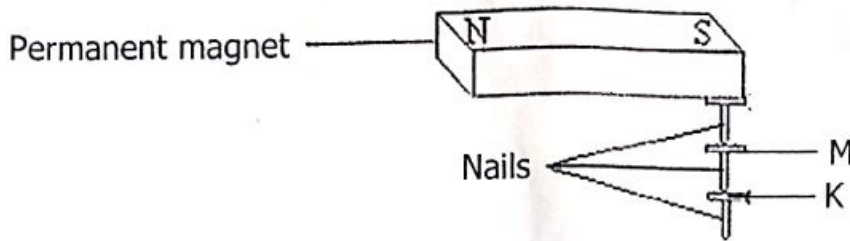
30. On the diagram below, a light ray is seen striking a smooth shiny surface. With the help of a ruler and a pencil, show how it is reflected.



31. State any **one** law of reflection.  
.....
32. Write **one** way a P.7 pupil can improve the yields for annual crops.  
.....
33. Give **one** way trees purify air in the environment.  
.....
34. Identify any **one** example of biological changes.  
.....
35. How best can a school going pupil avoid contracting STDs?  
.....
36. How are canine teeth adapted to their function in carnivorous animals?  
.....
37. Why should a pit latrine be constructed at least 30 metres away from the water source?  
.....
38. Mention **one** exotic breed of goats kept for milk production.  
.....
39. Write PHC in full.  
.....
40. How is the pulmonary vein different from other veins?  
.....

**SECTION B (60 MARKS)**

41. **Study the diagram about making magnets and answer questions about it.**



(a) Identify the method of making magnets above.

.....

(b) Name the pole marked **K**.

.....

(c) What will happen to nails when removed from the permanent magnet.

.....

(d) What name is given to a magnet made by the above method?

.....

42. (a) Which type of metamorphosis does a cockroach undergo?

.....

(b) Name the second stage in the life cycle of a cockroach.

.....

(c) Besides a cockroach, cite out **one** other example of an insect with such a life cycle mentioned in (a) above.

.....

(d) In which **one** way are cockroaches dangerous to human life?

.....

43. (a) Mention any **one** type of resources.

.....

(b) Write down **two** examples of non-living resources that are non-renewable.

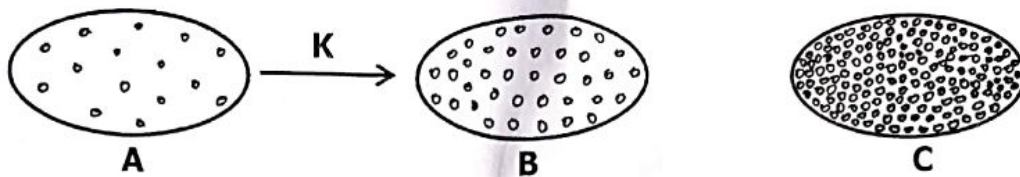
(i) .....

(ii) .....

(c) Give **one** reason why some resources should be used sparingly.

.....

44. Study the illustration carefully and answer questions about it.



(a) Identify the state of matter labeled B as shown above.

.....

(b) Which of the states of matter above allows heat transfer by conduction?

.....

(c) Why is heat transfer in A faster than that of C?

.....

(d) By the help of an arrow, show on the above diagram the process of melting.

45. (a) Identify the condition that makes a person to become unconscious for a short time.

.....

(b) State the major cause for the condition you have given in part (a) above.

.....

(c) Write any **one** factor that leads to unconsciousness in people.

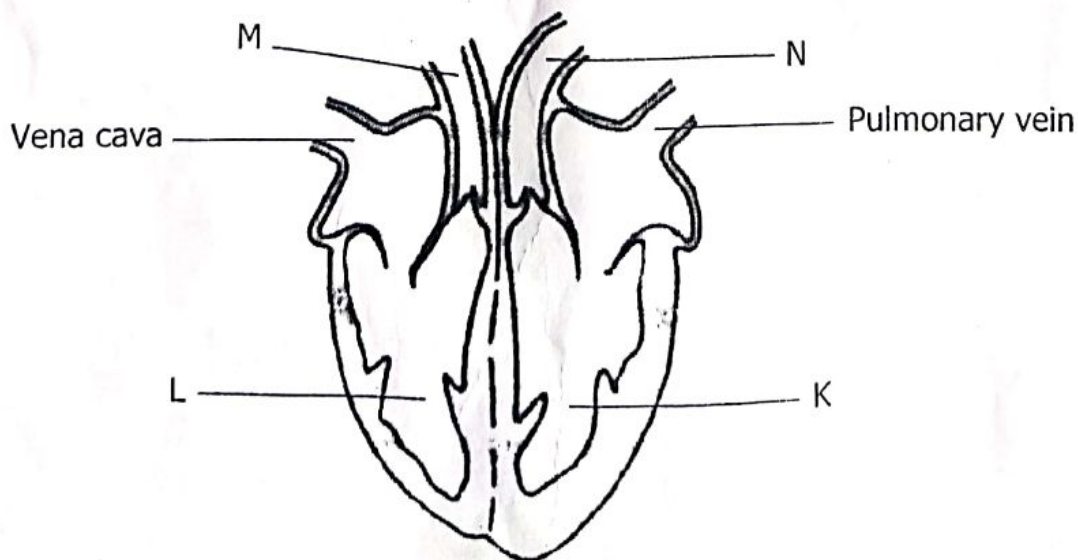
.....

(d) Why is it advisable to lie a victim of such condition on his back with his legs slightly higher than the head?

.....

46. (a) What name do we give to a special constructed habitat of rabbits?  
 .....  
 (b) Give **one** way of maintaining sanitation in a rabbit house.  
 .....  
 (c) Why is it advisable to put a wire mesh on most parts of a rabbit house?  
 .....  
 (d) State **one** way a farmer can avoid rabbits in a hutch from burrowing and escaping from their house.  
 .....
47. (a) Name the best food for the young babies.  
 .....  
 (b) Give any **one** advantage of breast feeding to a baby.  
 .....  
 (c) Identify **one** factor that forces a mother to use bottle feeding to care for a newly born baby.  
 .....  
 (d) Which element of PHC is promoted by a mother breast feeding a baby?  
 .....

48. **Study the mammalian body organ and carefully attempt questions about it.**





(a) Name the human organ drawn above.

.....

(b) Identify the blood vessel labeled **N**.

.....

(c) Which type of blood is pumped through vessel **M**?

.....

(d) By help of arrows, show how blood moves through the heart.

49. **Match ways the following mixtures can be separated.**

**Mixtures**

**Way of separating**

- |                            |                            |
|----------------------------|----------------------------|
| (i) Salt solution          | - filtration               |
| (ii) Rice and husks        | - evaporation to dryness   |
| (iii) Seeds in fruit juice | - use of separating funnel |
| (iv) Oil and water         | - winnowing                |

- (a) Salt solution .....
- (b) Rice and husks .....
- (c) Seeds in fruit juice .....
- (d) Oil and water .....

50. **Given the list of organisms in the environment, study it and answer questions that follow.**

- hens      - bacteria      - grasshopper      - millet plant      - eagles

(a) What name is given to a feeding relation among organisms in the above list?

.....

(b) Identify the organism in the above list that is said to be a decomposer.

.....

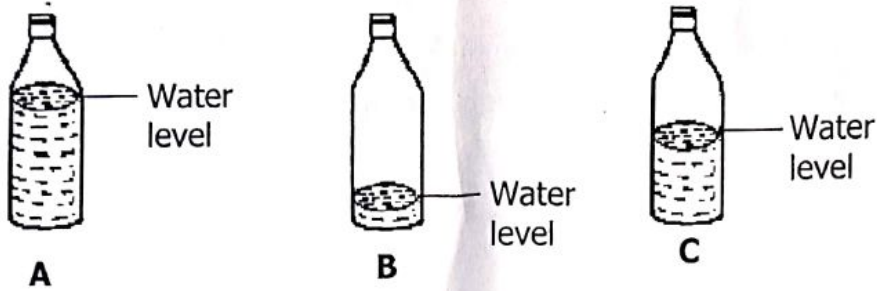
(c) State what would happen to eagles if all the hens are eaten by people.

.....

(d) Organize the above given organisms and form a feeding relationship showing right energy flow.

.....

51. Below are bottles of same size with different water levels. Use them to answer questions that follow.



(a) To which group of musical instruments do the above bottles belong?

.....

(b) Which of the above instruments will produce;

(i) the lowest pitch?

.....

(ii) the highest pitch?

.....

(c) Give **one** factor that affects speed of sound.

.....

52. Given a list of plants below, study it carefully and answer questions that follow.

**Conifers , simsim , ferns , castor , oil , liverworts , maize**

(a) Identify any **two** examples of non-flowering plants from the above list which reproduces by means of spores.

(i) .....

(ii) .....

(b) In which way do ferns reproduce?

.....

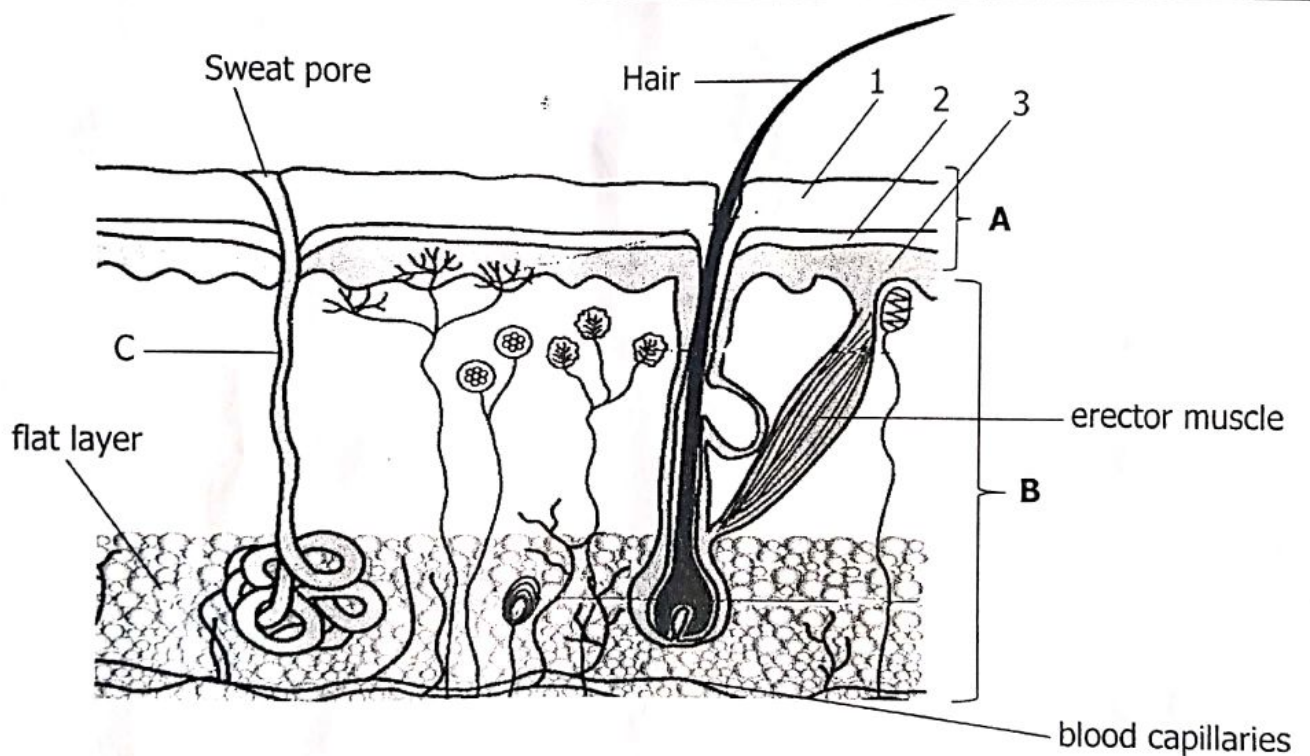
(c) Apart from making their own food, give another way conifers are similar to bean plants.

.....

53. Complete the table for immunization below.

Disease	Vaccine	Site
Polio	Polio vaccine	(i) .....
(ii).....	BCG vaccine	Right upper arm
Measles	(iii) .....	Left upper arm
(iv) .....	DPT vaccine	Left upper thigh

54. The diagram below is of human skin. Use it to answer questions that follow.



(a) Identify the layers labeled **A** and **B**.

(i) **A** .....

(ii) **B** .....

(b) Which of the parts on the above skin contains melanin pigment?

.....

(c) How important is melanin pigment to the skin?

.....

55. (a) Write any **two** examples of harmful fungi.

(i) .....

(ii) .....

(b) State **one** danger of some fungi to people.

.....

(c) Apart from baking, identify **one** other process that requires use of useful fungi.

.....

**END**  
**GOOD LUCK**